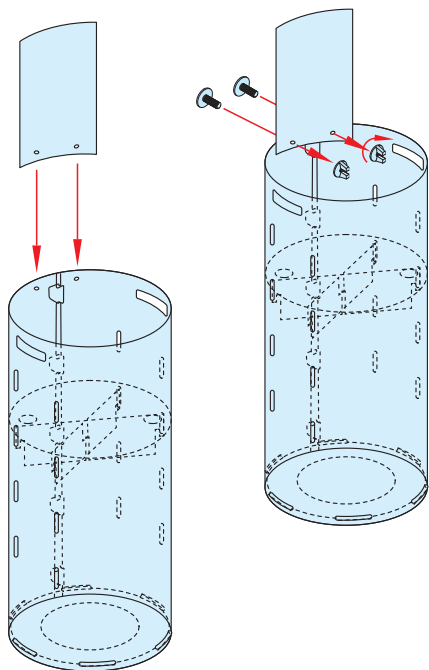
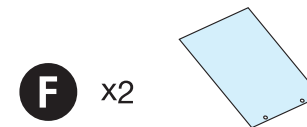
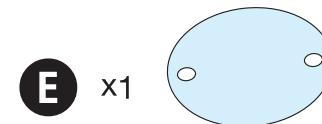
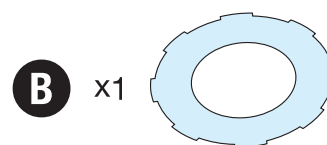
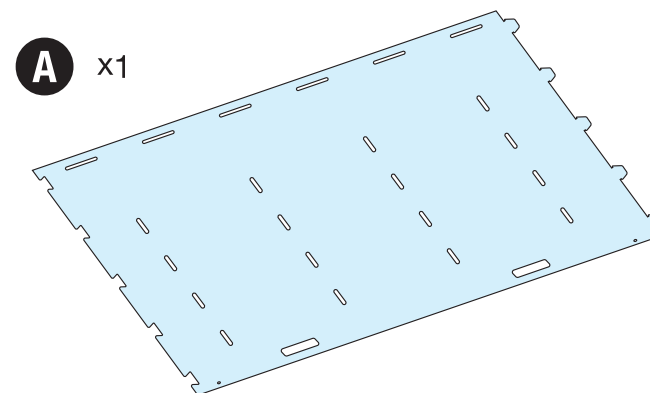


6 Fissare la tasca porta comunicazione **F** all'espositore con le 2 viti **G**.



ISTRUZIONI MONTAGGIO ESPOSITORE CIRCOLARE ANTI SHOCK SMONTABILE

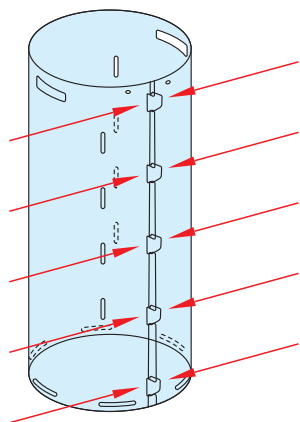


Synco S.r.l.
via G. Pastore, 30
21046 Gurone di Malnate (VA)
Italy

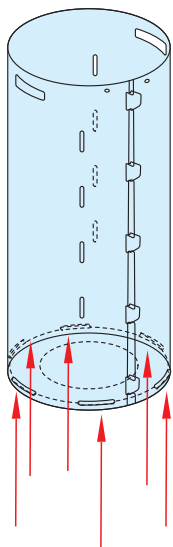
Tel: +39 0332 420711
Fax: +39 0332 425247
Email: synco@syncospa.com
Web: www.synco.it

1 Eliminare la pellicola di protezione da tutti i pezzi trasparenti.

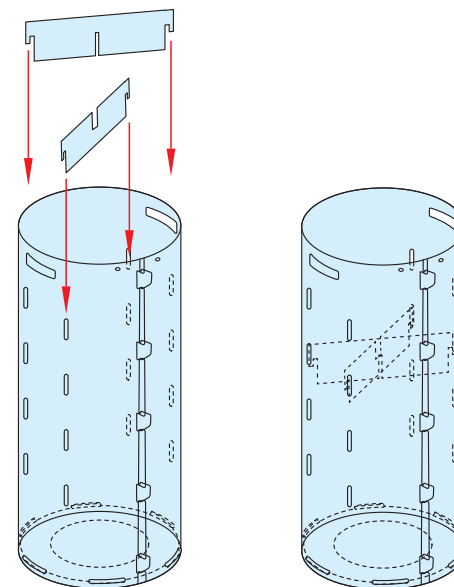
2 Assemblare il pezzo **A** come da disegno.



3 Assemblare il pezzo **B** negli appositi fori, come da disegno.



4 Assemblare i pezzi **C** e **D** come da disegno nella profondità desiderata.



5 Inserire poi il ripiano **E**.

